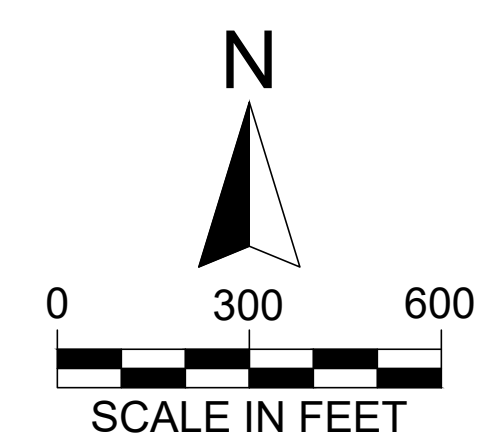


LEGEND

- EGRESS ROUTE USING EXISTING PRIVATE ROADS
- EGRESS ROUTE CONNECTOR (TO BE CONSTRUCTED)
- JEFFERSON COUNTY PARCEL BOUNDARY
- JEFFERSON COUNTY PARCEL NUMBER

21-092-00-006



PROJECT
**CRESCENT PARK SUBDIVISION
EGRESS ROUTE**

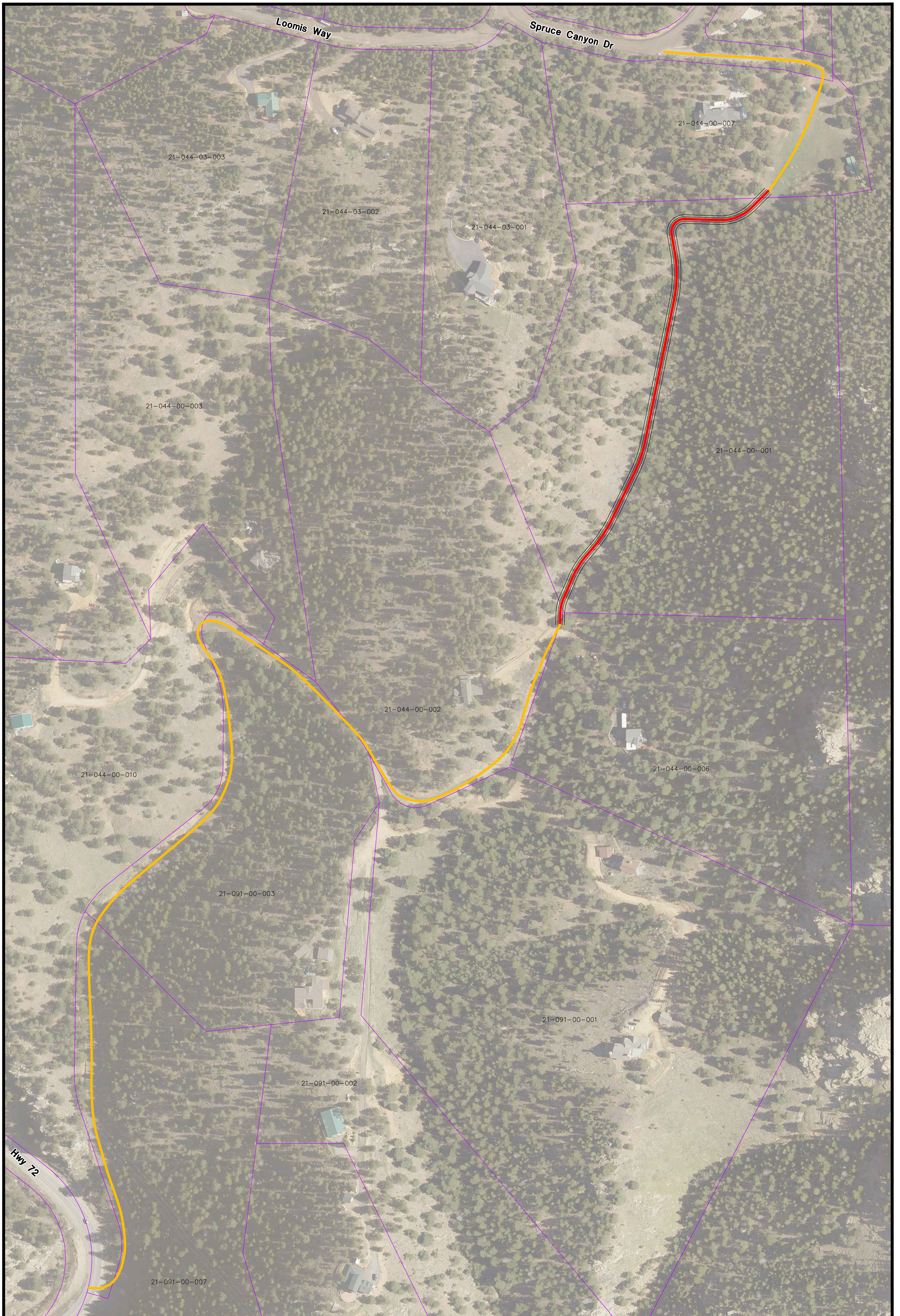
SHEET:
**1
of
2**

TITLE
OVERALL SITE MAP

DATE
03/25/2024

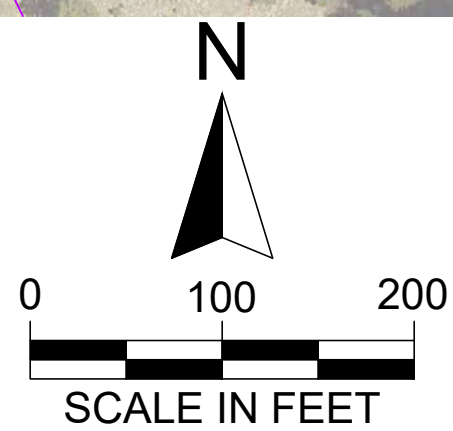
PROJ. NO.
CPER

SEE SHEET 2



LEGEND

- APPROXIMATE SUBDIVISION BOUNDARY
- EGRESS ROUTE USING EXISTING PRIVATE ROADS
- EGRESS ROUTE CONNECTOR (TO BE CONSTRUCTED)



PROJECT
**CRESCENT PARK SUBDIVISION
 EGRESS ROUTE**

TITLE
EGRESS ROUTE DETAIL

SHEET: **2**
 of
2

DATE: XX/XX/XX

PROJ. NO. **CPER**